

The History of Children's Library Design: Continuities and Discontinuities

Alistair Black

(Graduate School of Library and Information
Science, University of Illinois, USA)

Carolynn Rankin

(School of Applied Global Ethics, Leeds
Metropolitan University, UK)

Session 103 - Libraries for Children and Young Adults and Library
Buildings and Equipment. World Library and Information Congress: 75th
IFLA General Conference and Assembly. 24th August 2009, Milan, Italy

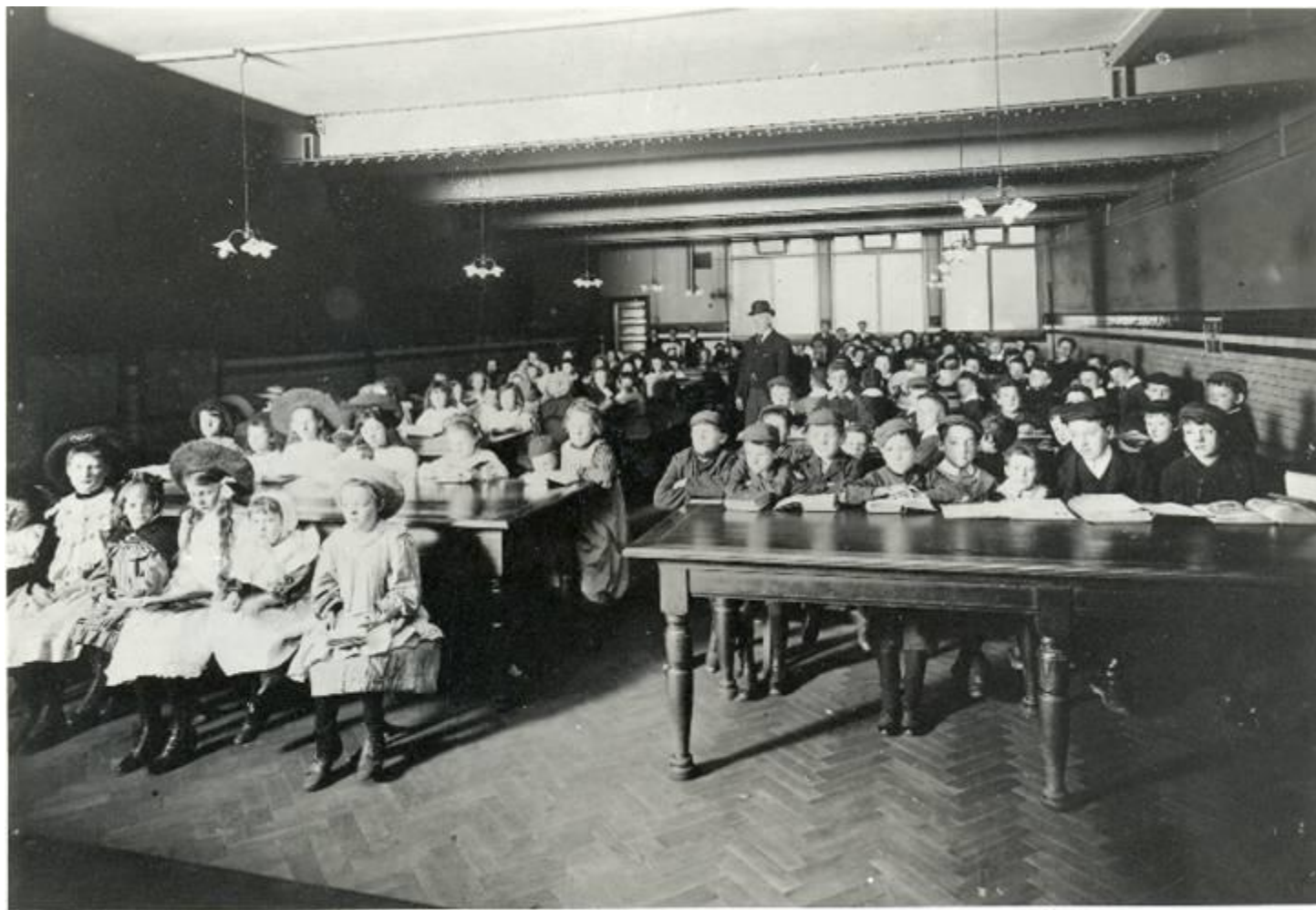
Sources and Methods

- The Library Association Record 1899 – 2002
- Contemporary library and architectural press
- Local Studies collections: library records and photographs
- Visits to children's libraries
- Websites illustrating children's libraries

Periods and Themes

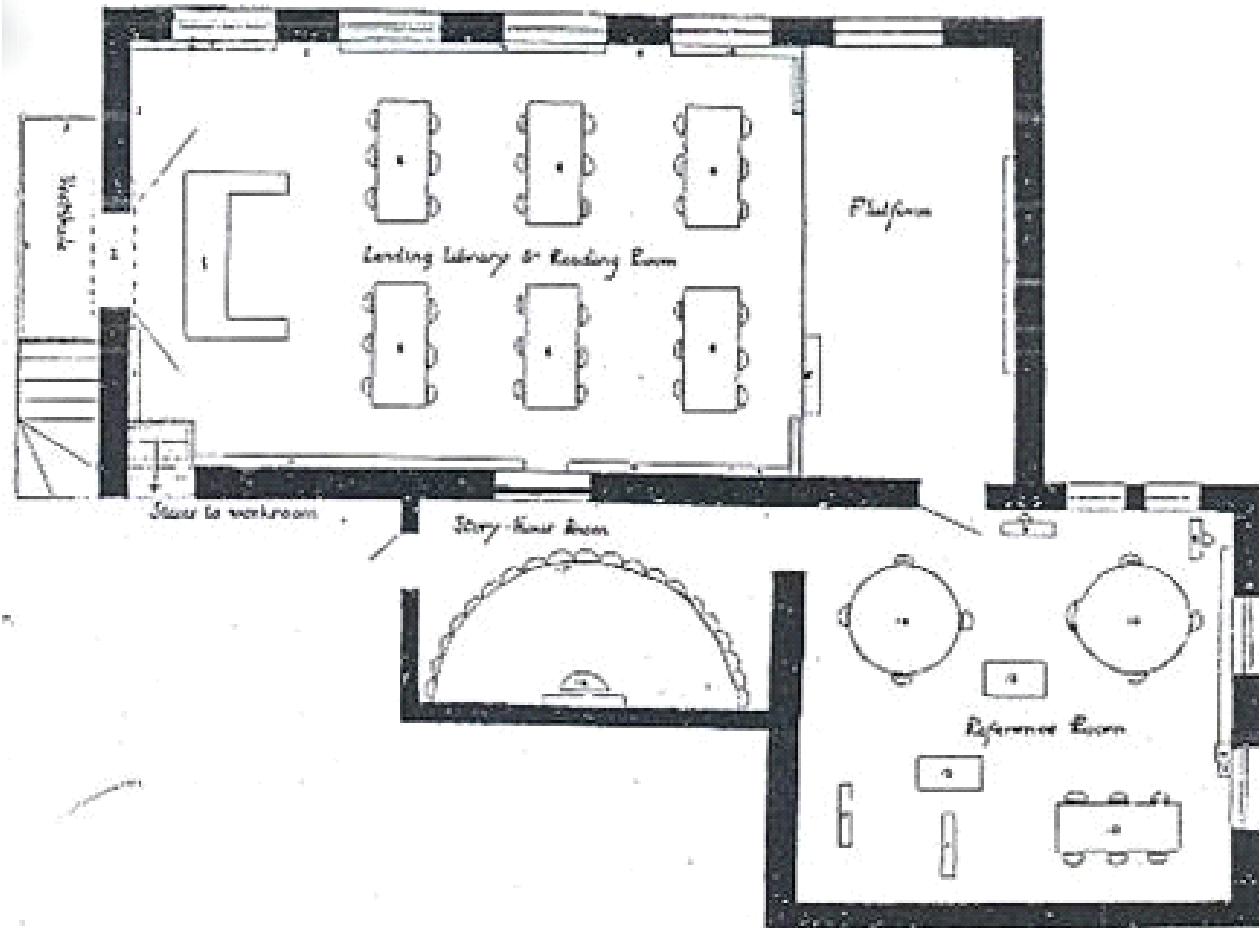
- Before 1914:
 School and Shelter
- The 1920s and 1930s:
 Home and Constructive Play
- 1945-1980:
 Open Plan and Modern Office
- After 1980:
 Domestic 'Comfort Zone' and Pop
 Culture Playground

Before 1914: School and Shelter







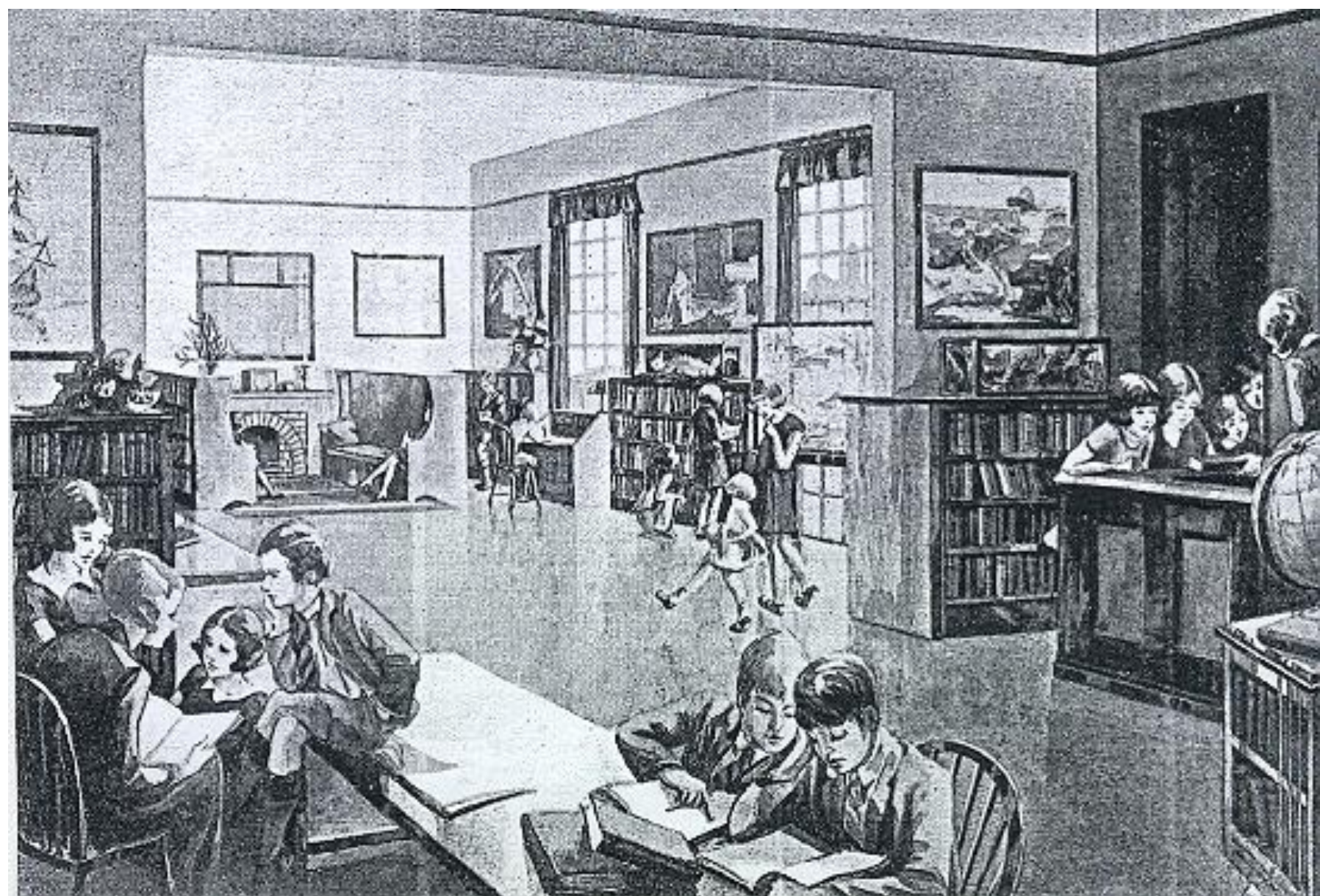


Plan of the ideal children's library, 1913

The 1920s and 1930s: Home and Constructive Play















**1945-1980:
Open Plan and Modern Office**



“...the community is rough and tough” but children read poetry at Kirkby





Children's Library, Lauritsala Library, Sweden 1957



Children's wing, Winnetka Library, Illinois



Brentford Library
before....

... and after



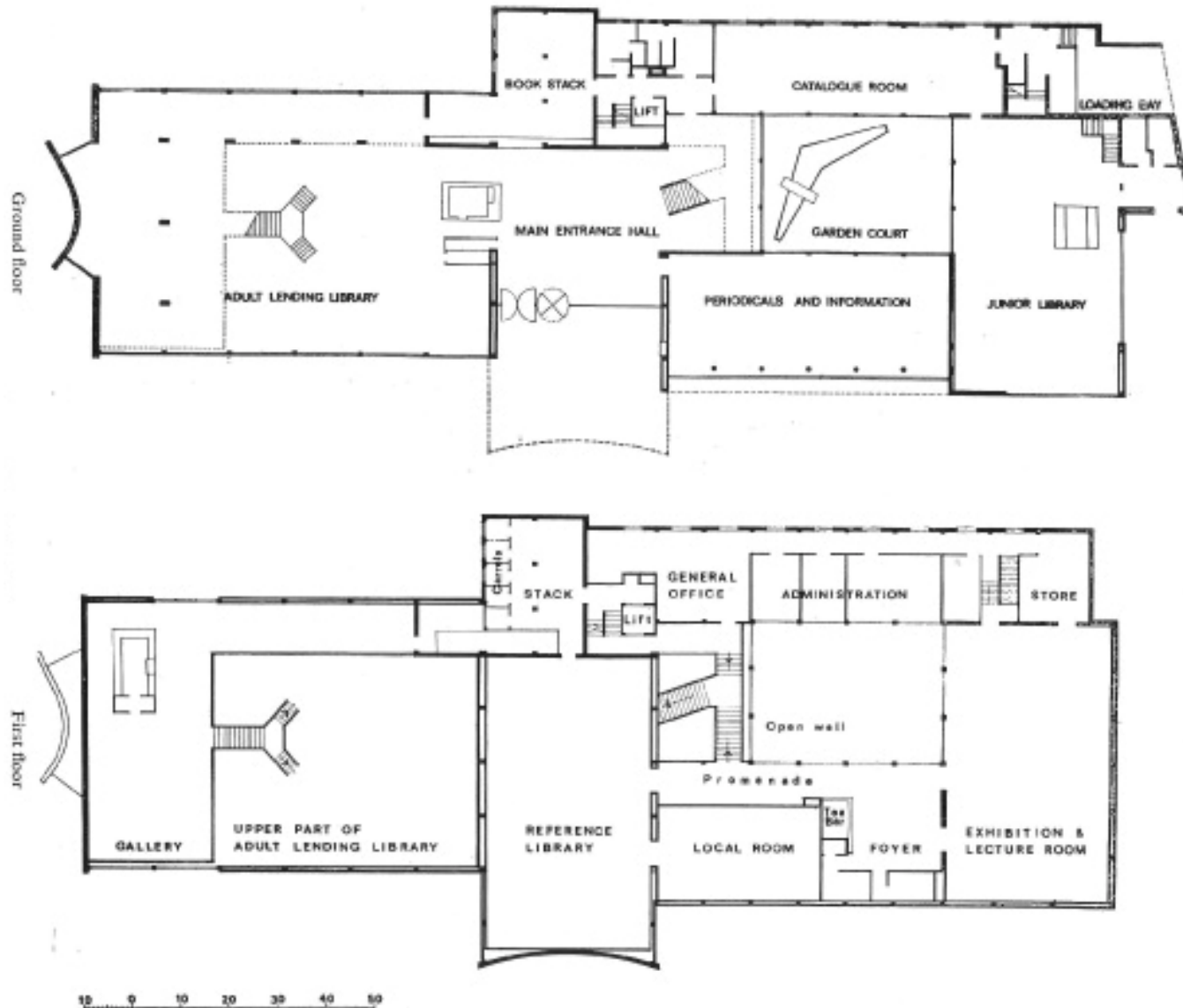
LIONEL R. McCOLVIN, CBE

Libraries for Children

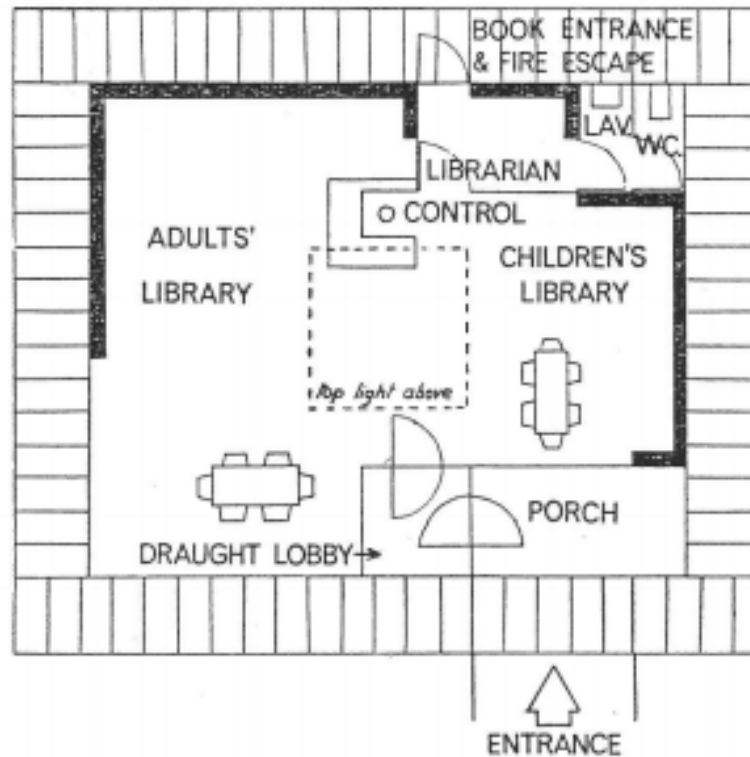




Hornsey: New Central Library, 1965

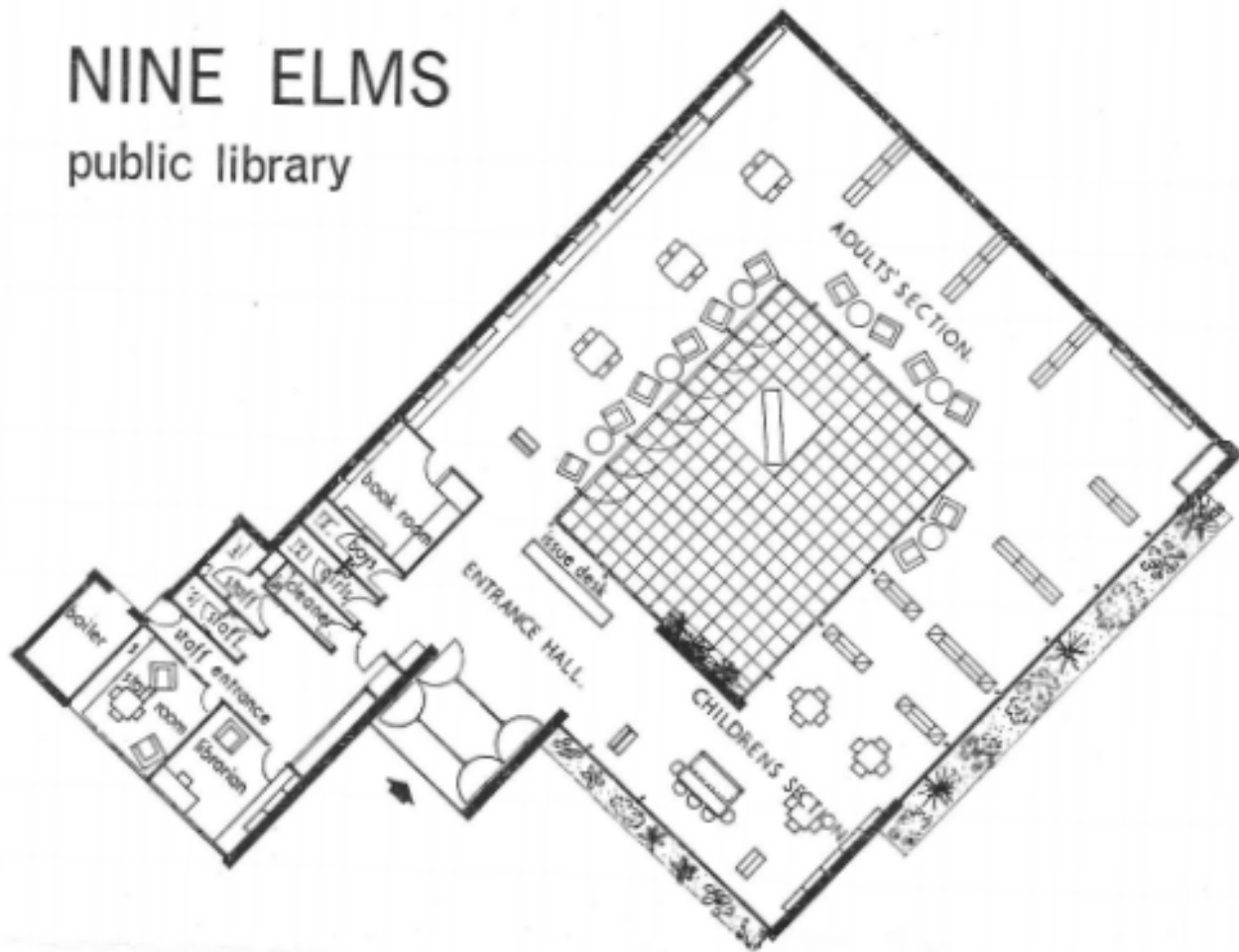


Mount Sorrel



NINE ELMS

public library





Selsey Public Library





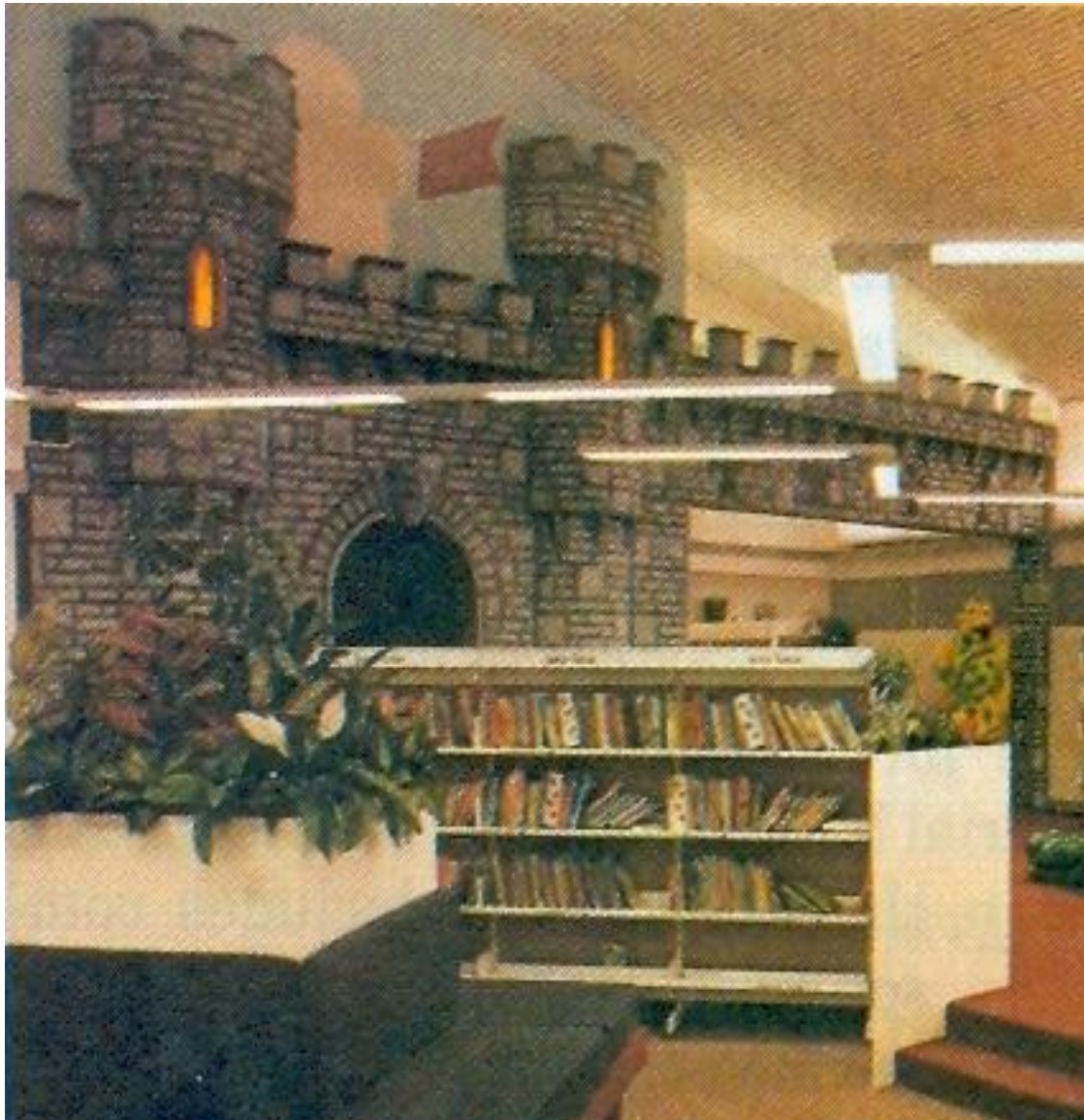
Bromley Children's Library, 1977

**After 1980:
Domestic 'Comfort Zone' and
Pop Culture Playground**



Güterslow Public Library, Germany, 1989





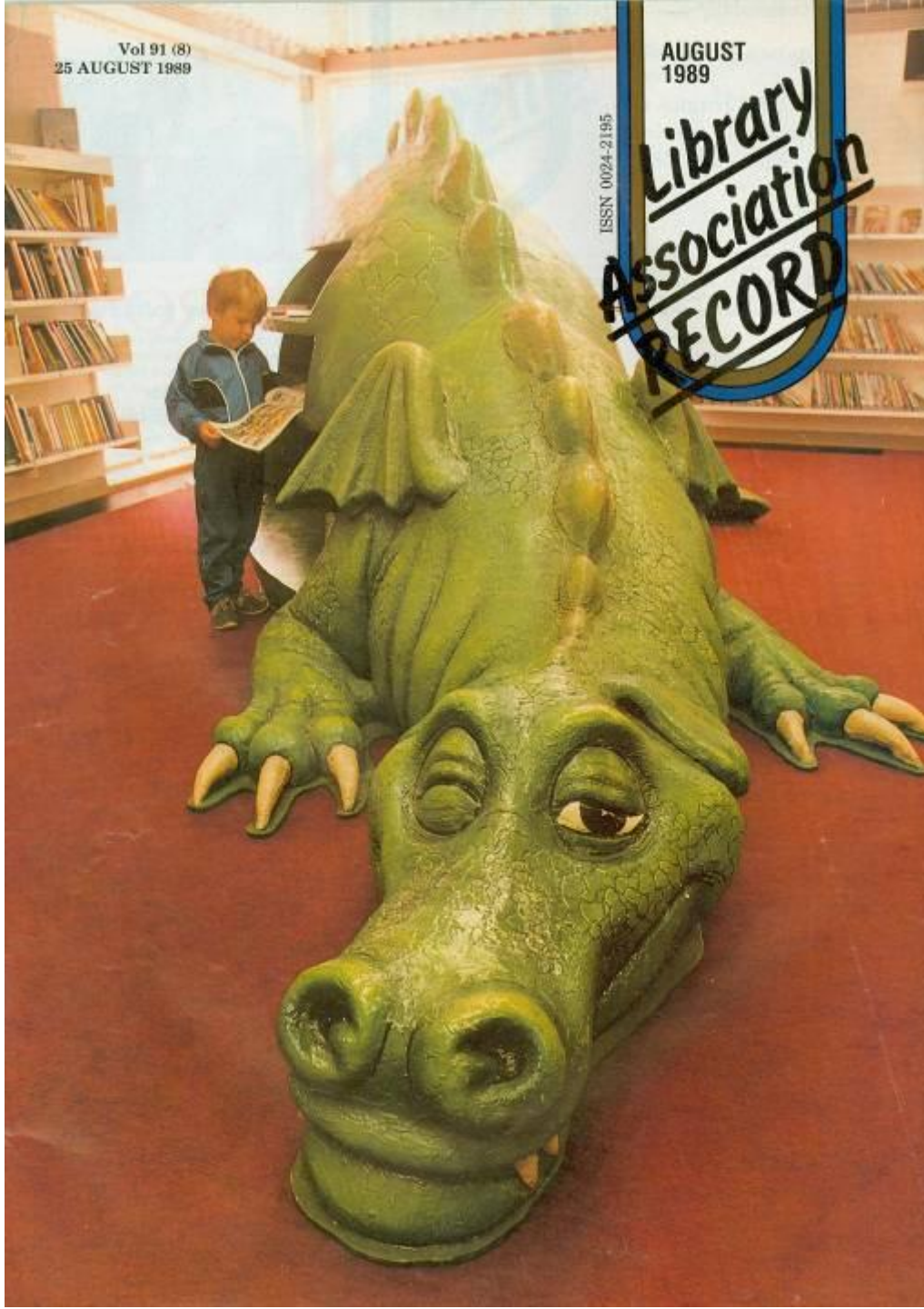
Waterthorpe Public Library, Sheffield
1989

Vol 91 (8)
25 AUGUST 1989

ISSN 0024-2195

AUGUST
1989

**Library
Association
RECORD**



Waterthorpe
Public Library,
Sheffield, 1989



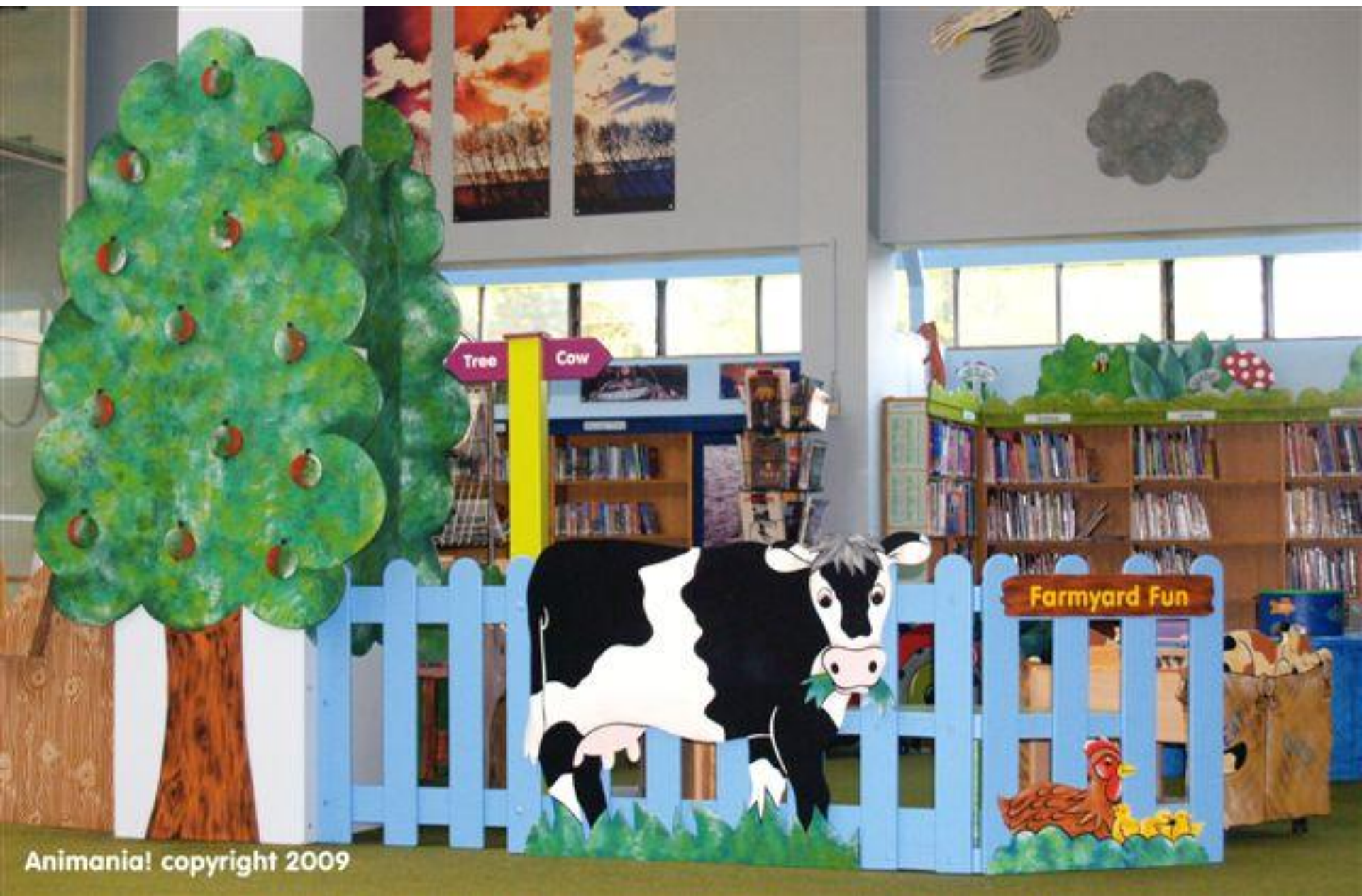
Animania! copyright 2009



Animania! copyright 2009



Animonid! copyright 2009



Animania! copyright 2009







The Book Jungle, Sutton Children's Library
(Source: Designing Libraries website)



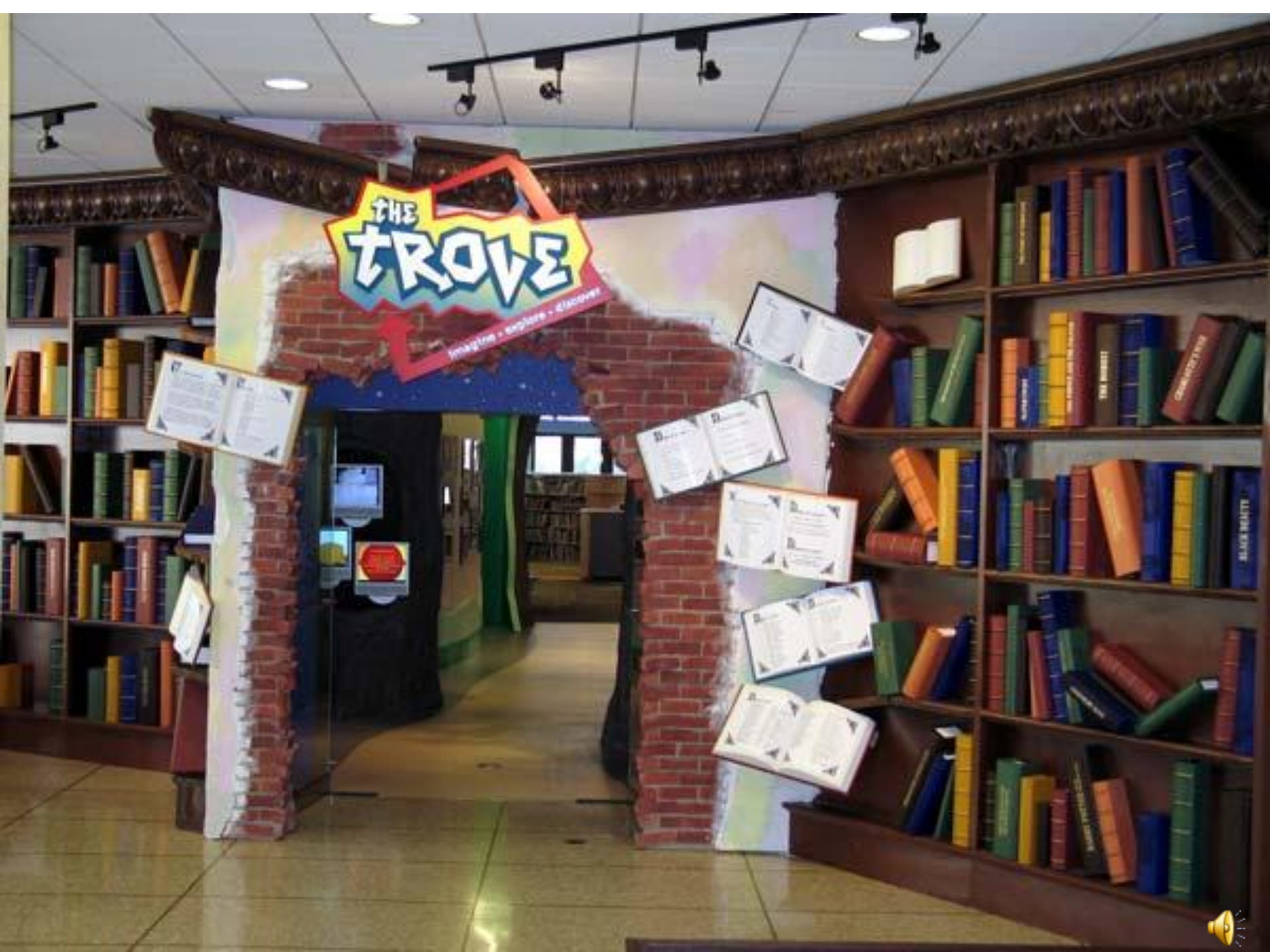
Courtesy of Opening the Book



Courtesy of Opening the Book



Courtesy of Opening the Book



THE TROVE

Imagining • Exploring • Discovering

Open book display on the left side of the archway.

Open book display on the right side of the archway.

Open book display on the right side of the archway.

Open book display on the right side of the archway.

Open book display on the right side of the archway.



The Castle

Activity room for crafts, tutoring and after-school activities for up to 25 children.

Play Cottage

This mini-performance and play area for tots features a puppet stage, dollhouse and "kitchen."

The Sallaway

Settle into a peaceful reading perch in the stern of a ship.

The Compass

From this central service point, navigate the world of information and discover The Trove with our librarians.

Copper Beech Garden

Gather under a leafy skylight oasis for a quick snack and a good read.

Galaxy Hall

Auditorium space for up to 75 children to enjoy performances and events.

Tree Trail Gallery

View children's artwork and educational displays along this pathway of starry lights under an archway of trees.

Enter The Trove...

through what appears to be a break in the wall, where bookshelves have tumbled to reveal treasures beyond.

StoryTrove

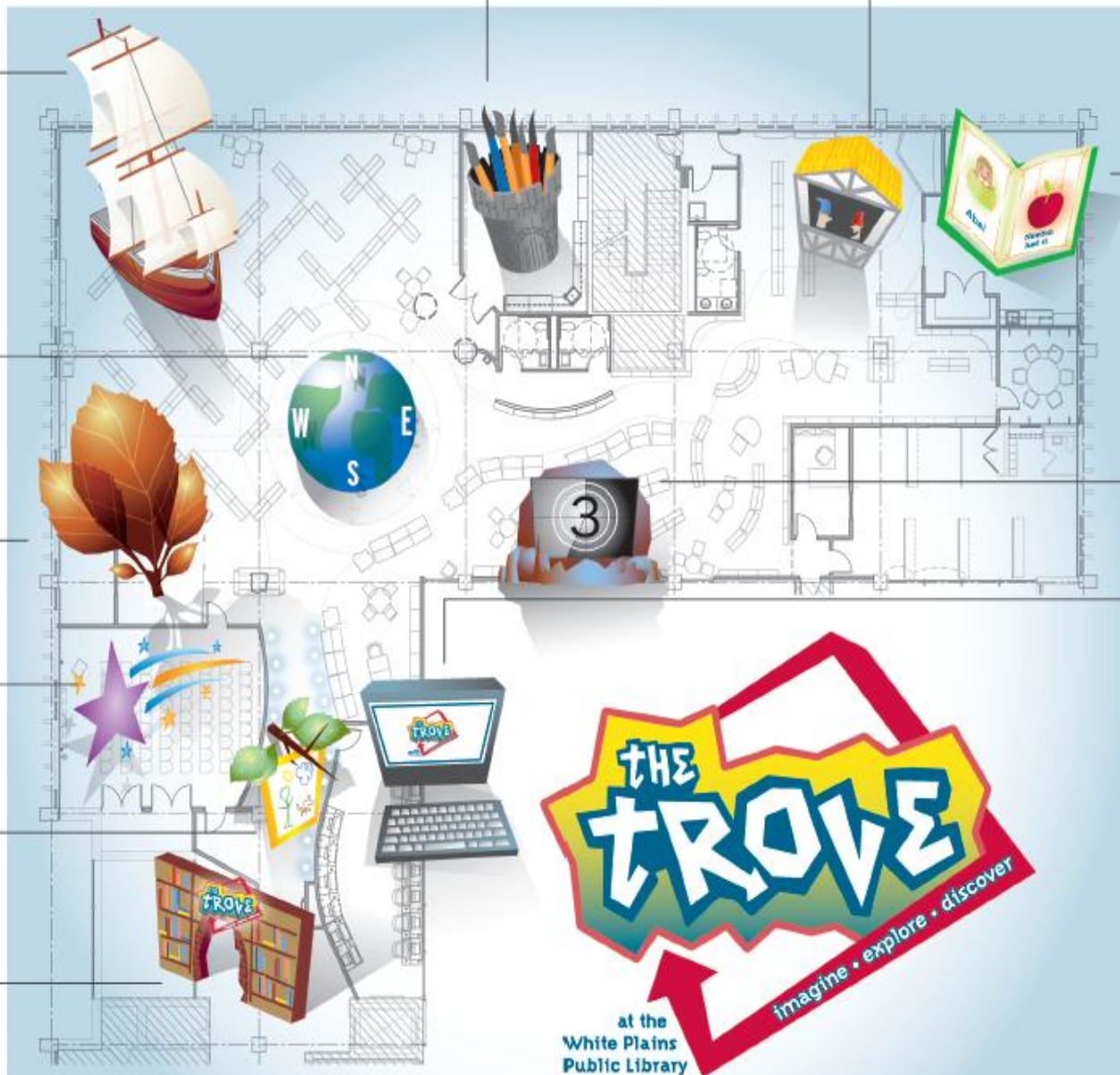
Program and play space for up to 45 babies, toddlers and their families.

The Cave

Flat screen viewing area for small groups to enjoy a movie under a sound dome.

CyberTrove

Technology center with 15 computers for children K-6th grade, with free access to games, word processing, online tutors and learning services.



at the
White Plains
Public Library

imagine • explore • discover



Children's Library



Mowbray Gardens, Rotherham
Courtesy Opening the Book



Children's library in the Idea Store, Whitechapel
(Source Designing Libraries website)



Starry sky at Folkstone's Childrens Library
(Source: Designing Libraries Website)

A hand is shown from the bottom, cupping a glowing blue and white globe of the Earth. A trail of bright, multi-pointed starburst lights curves from the top left, around the globe, and down towards the bottom right. The background is a deep, dark blue.

Discover

Continuities and Discontinuities

Thank you for listening

Contact details

Professor Alistair Black

a.black@illinois.edu

Carolynn Rankin

c.rankin@leedsmet.ac.uk