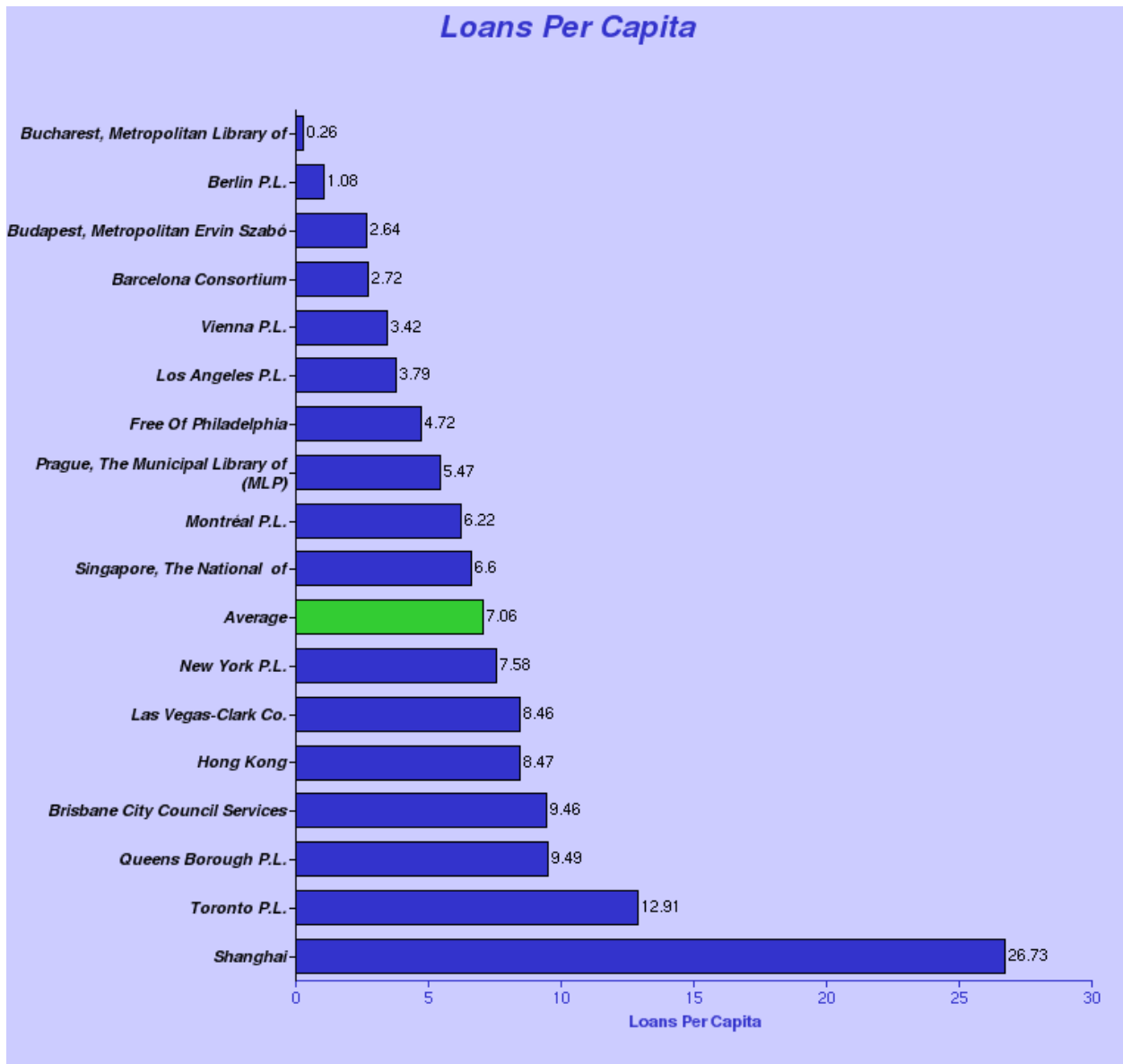




2010 IFLA How we Compare

Circulation per Capita (libraries serving population 1,000,000 and over)

Collection: **IFLA MLS** Period **2010**

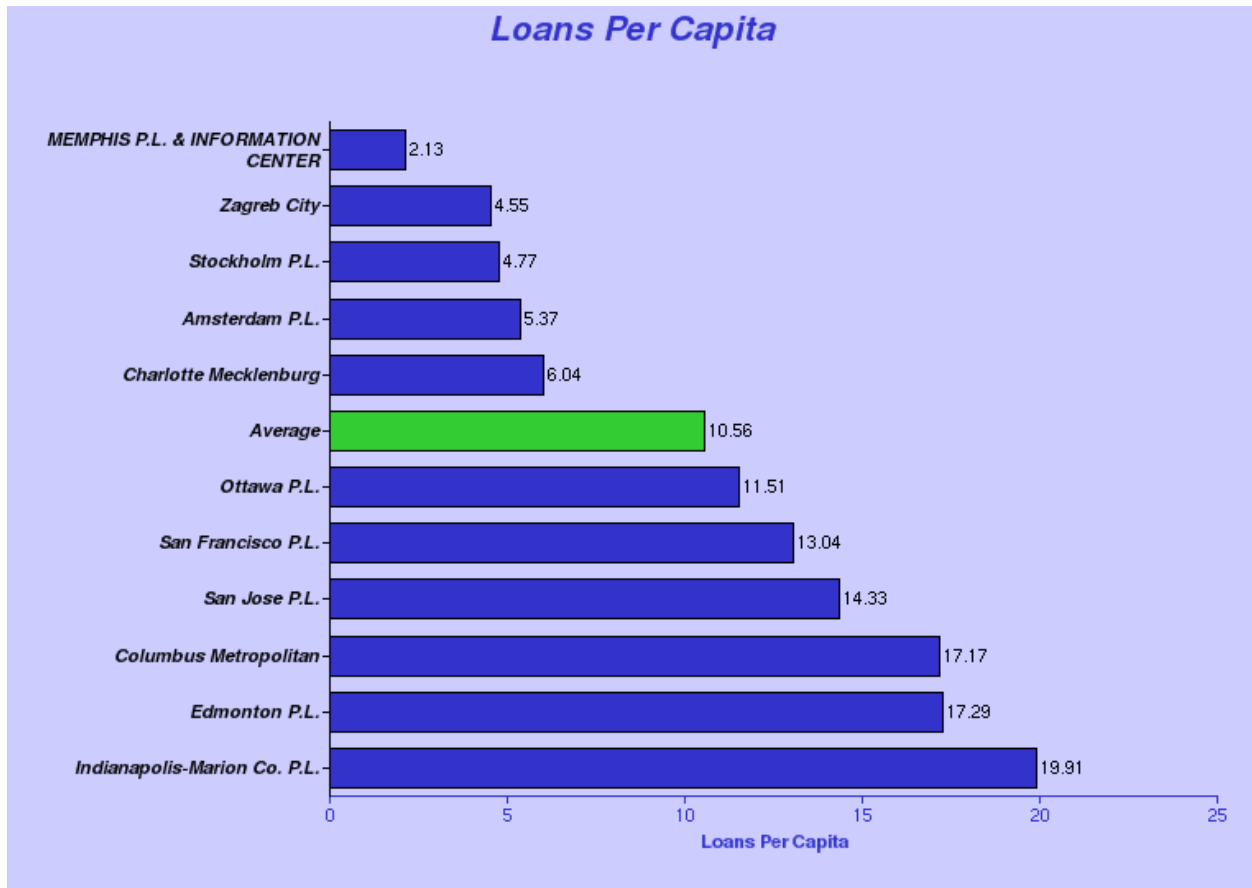




2010 IFLA How we Compare

Circulation per Capita (libraries serving population 999,999-750,000)

Collection: **IFLA MLS** Period **2010**

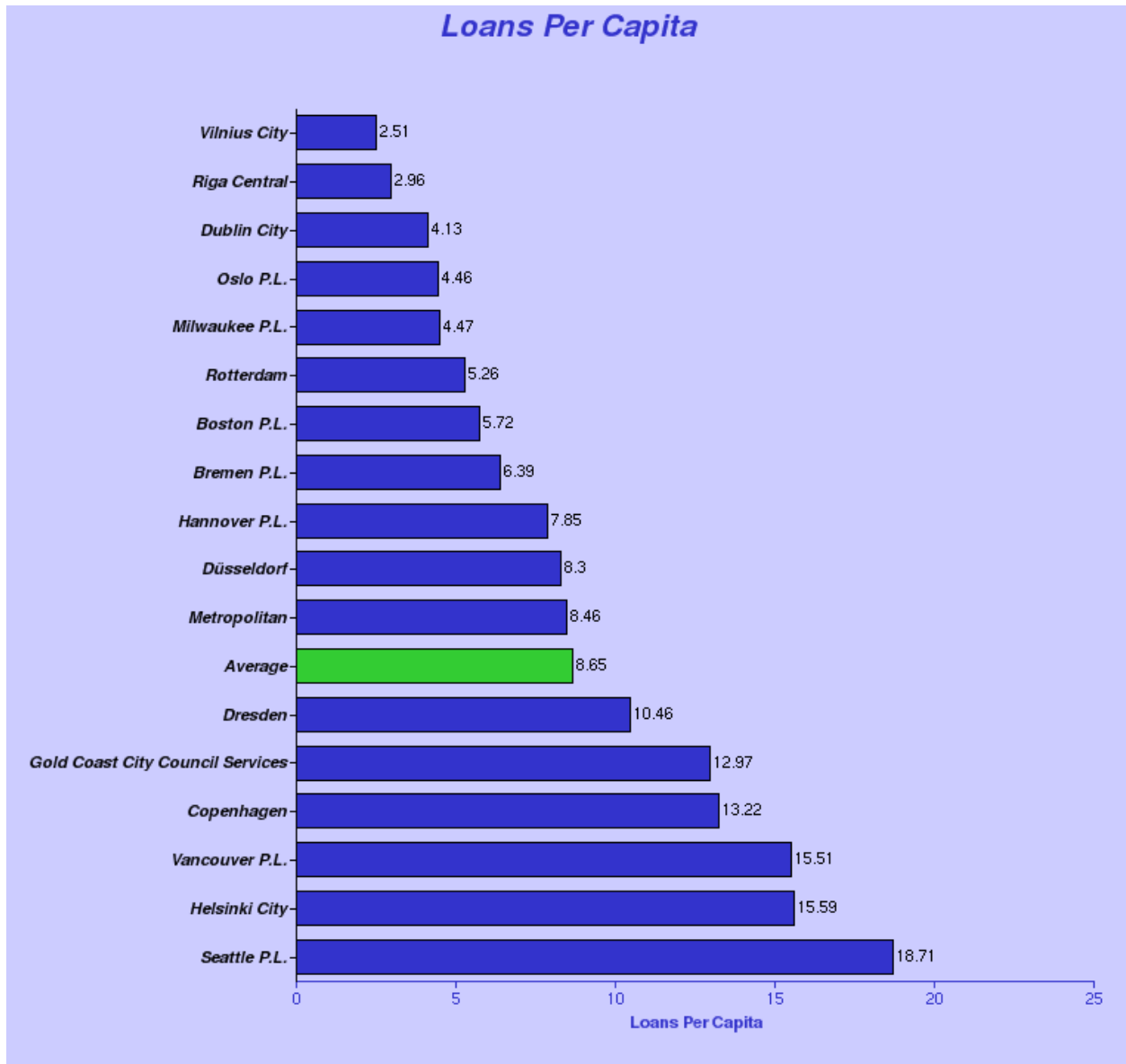




2010 IFLA How we Compare

Circulation per Capita (libraries serving population 749,000-500,000)

Collection: **IFLA MLS** Period **2010**





2010 IFLA How we Compare

Circulation per Capita (libraries serving population under 500,000)

Collection: **IFLA MLS** Period **2010**

